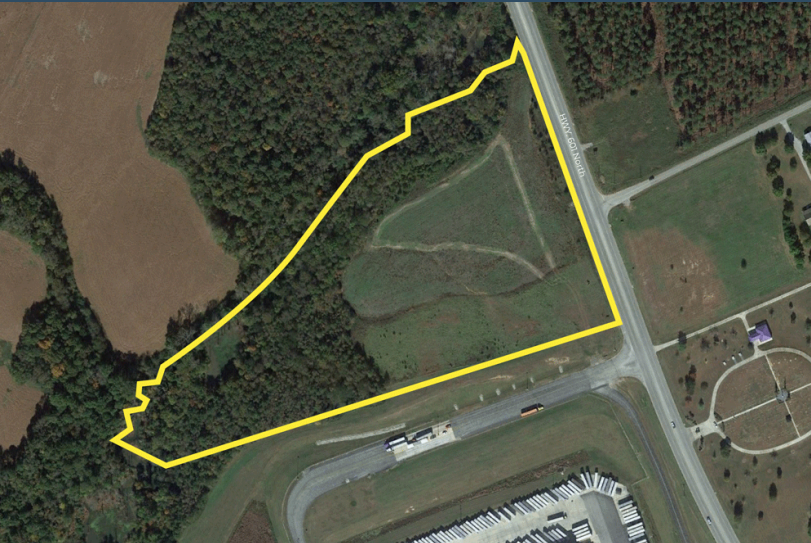


# LYNCHEs RIVER INDUSTRIAL PARK - NORTH



Pageland, SC 29728

Latitude and Longitude: 34.804120000, -80.41238000



## LOCATION INFORMATION

City	Pageland
State	SC
Zip	29728
County	Chesterfield
Date Available	10/14/2022
Municipality	Town
Latitude and Longitude	34.804120000, -80.41238000

# LYNCHEs RIVER INDUSTRIAL PARK - NORTH



## UTILITIES INFORMATION

Type of Electric	Distribution & Transmission
Primary Electric Provider	Lynches River Electric Cooperative, Inc.
Voltage	Transmission 69vK; Distribution 12.5kV & 25kV
Natural Gas Provider	Dominion Energy
Natural Gas Type	Interstate Transmission
Gas Main Size	6"
Distance to Nearest Gas Line	On Site
Telecommunications Provider	Sandhill Telephone Cooperative
Water Provider	Chesterfield County Rural Water
Water Main Diameter	6"
Distance to Water Main	On Site
Wastewater Provider	Town of Pageland
Wastewater Type	Force
Wastewater Line Diameter	8"

## BROKERAGE DETAILS

Sale Price Per Acre	\$9,500
---------------------	---------

## SITE INFORMATION

Total Acres	23
Minimum Divisible Acreage	5
Maximum Contiguous Acreage	23
Developable Acres	23

Zoning	Industrial
Surrounding Land Use - North	Agricultural
Surrounding Land Use - South	Commercial
Surrounding Land Use - East	Agricultural
Surrounding Land Use - West	Agricultural
Site Condition	cleared
Elevation (Min)	571'
Elevation (Max)	571'
Soil Type	Clay Loam
Has Restrictive Covenants	No
Freeway Proximity is Favorable	F

# LYNCHEs RIVER INDUSTRIAL PARK - NORTH



## PROXIMITY INFORMATION

Nearest Airport

Charlotte Douglas International Airport

Nearest Interstate

I-77

Nearest Port

Inland Port Dillon

