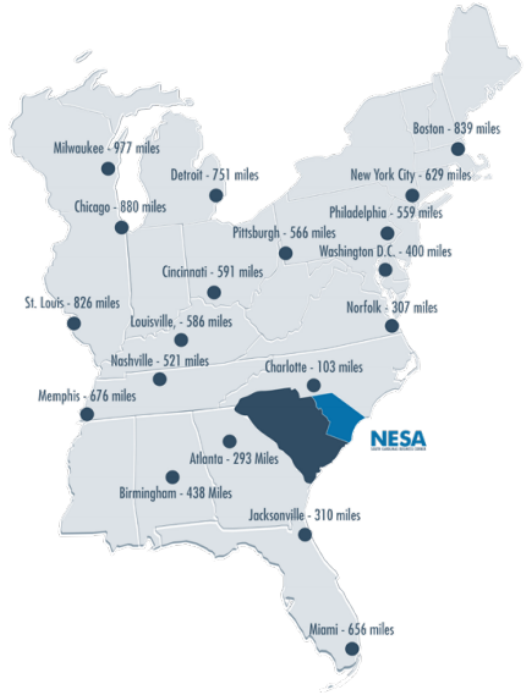
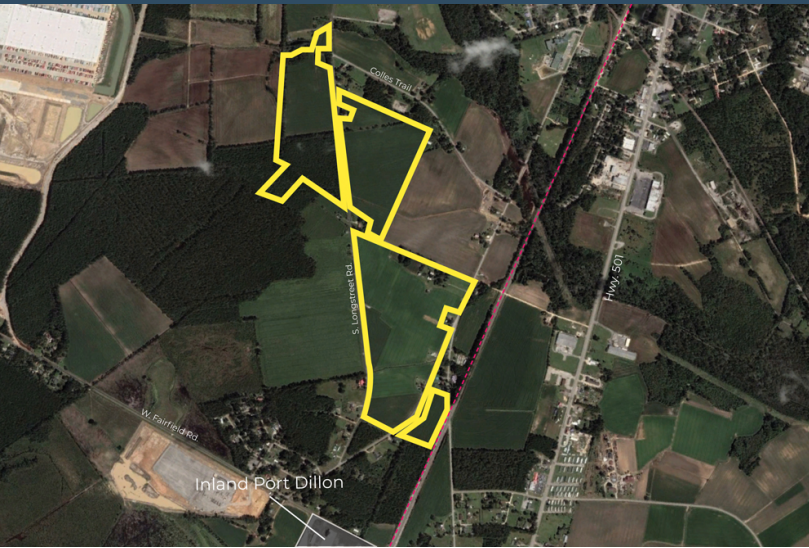


WOODLE SITE

South Longstreet Road
SC 29536

Latitude and Longitude: 34.399343, -79.393841



LOCATION INFORMATION

Address	South Longstreet Road
City	
State	SC
Zip	29536
County	Dillon
Date Available	10/14/2022
Municipality	Unincorporated
Latitude and Longitude	34.399343, -79.393841

WOODLE SITE

UTILITIES INFORMATION

Type of Electric	Distribution & Transmission
Primary Electric Provider	Duke Energy Progress
Natural Gas Provider	Dominion Energy
Natural Gas Type	Distribution
Gas Main Size	2" & 6"
Telecommunications Provider	AT&T
Water Provider	Trico Water Company
Water Main Diameter	6", 8", & 10"
Wastewater Provider	City of Dillon
Wastewater Type	Force
Wastewater Line Diameter	12"

BROKERAGE DETAILS

Sale Price Per Acre	\$35,000
---------------------	----------

SITE INFORMATION

Total Acres	163
Developable Acres	157
Surrounding Land Use - North	Mixed Use
Surrounding Land Use - South	Light Industrial
Surrounding Land Use - East	Mixed Use
Surrounding Land Use - West	Light Industrial
Site Condition	cleared
Elevation (Min)	114'

Elevation (Max)

115'

Rail Available

1

WOODLE SITE

PROXIMITY INFORMATION

Nearest Airport

Florence Regional Airport

Nearest Interstate

I-95

Nearest Port

Inland Port Dillon

