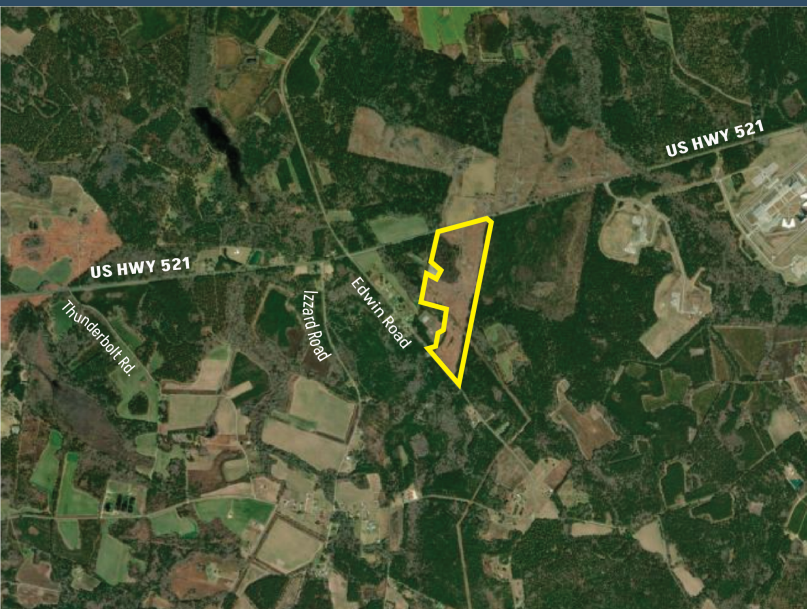


TRI-AREA BUSINESS CENTER



Lane, South Carolina 29590

Latitude and Longitude: 33.584862610, -79.90245990



LOCATION INFORMATION

City	Lane
State	South Carolina
Zip	29590
County	Williamsburg
Date Available	10/14/2022
Municipality	Unincorporated
Latitude and Longitude	33.584862610, -79.90245990

TRI-AREA BUSINESS CENTER



UTILITIES INFORMATION

Primary Electric Provider	Santee Electric Cooperative, Inc.
---------------------------	-----------------------------------

Natural Gas Provider	Dominion Energy
----------------------	-----------------

Natural Gas Type	Distribution
------------------	--------------

Gas Main Size	4"
---------------	----

Distance to Nearest Gas Line	1 mile
------------------------------	--------

Telecommunications Provider	Farmers Telephone Cooperative
-----------------------------	-------------------------------

Water Provider	Williamsburg County
----------------	---------------------

Water Main Diameter	14"
---------------------	-----

Distance to Water Main	On Site
------------------------	---------

Wastewater Provider	Williamsburg County
---------------------	---------------------

Wastewater Type	Force
-----------------	-------

Wastewater Line Diameter	10"
--------------------------	-----

Wastewater Main Distance	On Site
--------------------------	---------

BROKERAGE DETAILS

Sale Price Per Acre	\$5,000
---------------------	---------

SITE INFORMATION

Total Acres	65
-------------	----

Minimum Divisible Acreage	Not Subdividable
---------------------------	------------------

Maximum Contiguous Acreage	Undetermined
----------------------------	--------------

Developable Acres	Undetermined
-------------------	--------------

Zoning	No Zoning Present
--------	-------------------

Surrounding Land Use - North	Undeveloped Land
------------------------------	------------------

Surrounding Land Use - South	Undeveloped Land
Surrounding Land Use - East	Undeveloped Land
Surrounding Land Use - West	Undeveloped Land
Site Condition	cleared
Elevation (Min)	65'
Elevation (Max)	70'
Soil Type	Fine Sandy Loam
Has Restrictive Covenants	No
Freeway Proximity is Favorable	F

TRI-AREA BUSINESS CENTER



PROXIMITY INFORMATION

Nearest Airport	Florence Regional Airport
Nearest Interstate	I-95
Nearest Port	Port of Charleston

