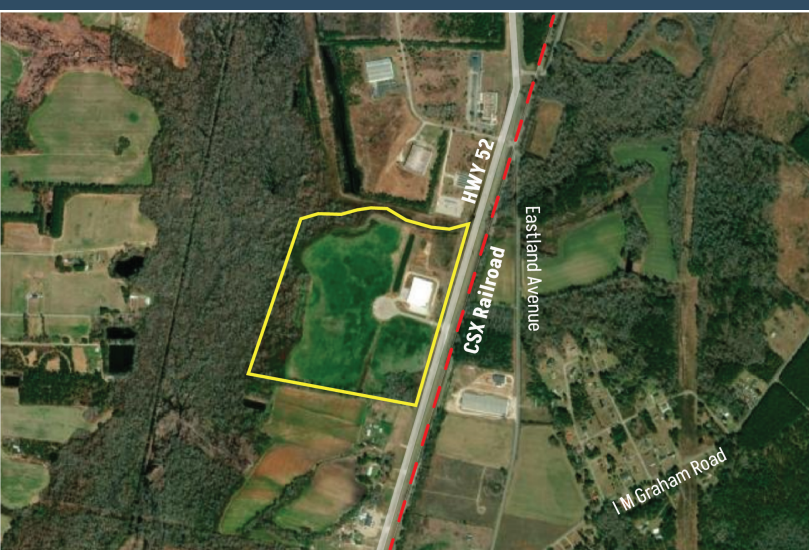


WILLIAMSBURG COOPERATIVE COMMERCE CENTRE SOUTH



Kingstree, SC 29556

Latitude and Longitude: 33.715275770, -79.81681851



LOCATION INFORMATION

City	Kingstree
State	SC
Zip	29556
County	Williamsburg
Date Available	
Municipality	Unincorporated
Latitude and Longitude	33.715275770, -79.81681851

WILLIAMSBURG COOPERATIVE COMMERCE CENTRE SOUTH



UTILITIES INFORMATION

Primary Electric Provider	Santee Electric Cooperative, Inc.
Natural Gas Provider	Dominion Energy
Natural Gas Type	Distribution
Gas Main Size	4"
Distance to Nearest Gas Line	On Site
Telecommunications Provider	Farmers Telephone Cooperative
Water Provider	Town of Kingstree
Water Main Diameter	8" and 14"
Distance to Water Main	On Site
Wastewater Type	Gravity
Wastewater Line Diameter	8" and 10"

BROKERAGE DETAILS

Sale Price Per Acre	\$12,000
Property Owner	County

SITE INFORMATION

Total Acres	111.5
Minimum Divisible Acreage	7
Maximum Contiguous Acreage	24
Developable Acres	82.1
Zoning	Industrial Park

Zoning	Industrial Park
Surrounding Land Use - North	Light Industrial
Surrounding Land Use - South	Light Industrial
Surrounding Land Use - East	Light Industrial
Surrounding Land Use - West	Light Industrial
Site Condition	cleared
Elevation (Min)	49'
Elevation (Max)	62'
Due Diligence Performed	Phase I Environmental Site Assessment, Protected Species Report, Cultural Resources Survey Phase I, Preliminary Geotechnical Assessment, Topographic Survey, Boundary Survey

WILLIAMSBURG COOPERATIVE COMMERCE CENTRE SOUTH



PROXIMITY INFORMATION

Nearest Airport

Florence Regional Airport

Nearest Interstate

I-95

Nearest Port

Port of Charleston

