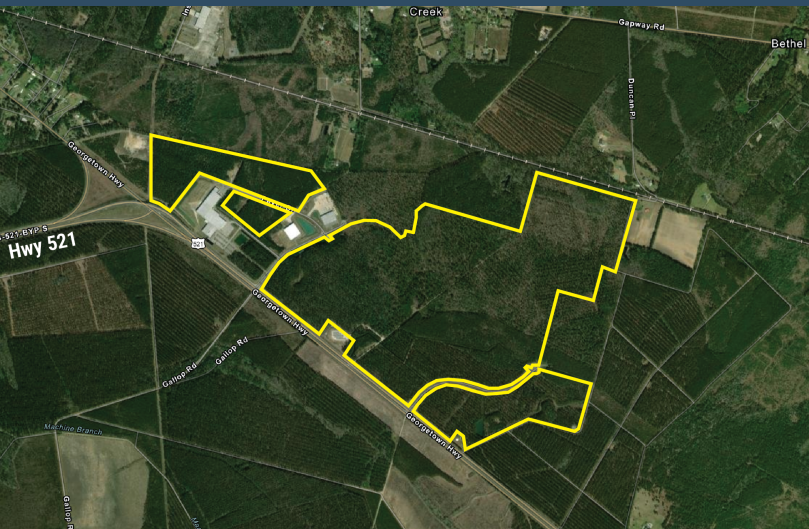


# GEORGETOWN COUNTY BUSINESS CENTER



Andrews, South Carolina 29510

Latitude and Longitude: 33.431510000, -79.52764000



## LOCATION INFORMATION

City	Andrews
State	South Carolina
Zip	29510
County	Georgetown
Date Available	10/14/2022
Municipality	Unincorporated
Latitude and Longitude	33.431510000, -79.52764000

# GEORGETOWN COUNTY BUSINESS CENTER



## UTILITIES INFORMATION

Primary Electric Provider	Santee Electric Cooperative, Inc.
Natural Gas Provider	Dominion Energy
Natural Gas Type	Interstate Transmission
Gas Main Size	4"
Telecommunications Provider	Frontier Communications
Water Provider	Georgetown County Water & Sewer
Water Main Diameter	8"
Distance to Water Main	On Site
Wastewater Provider	Georgetown County Water & Sewer
Wastewater Type	Gravity
Wastewater Main Distance	On Site

## BROKERAGE DETAILS

Minimum Price Per Acre	\$10,000
Property Owner	County
Maximum Price Per Acre	\$16,000

## SITE INFORMATION

Total Acres	612.93
Minimum Divisible Acreage	5
Maximum Contiguous Acreage	Undetermined
Developable Acres	447
Zoning	Heavy Industrial

Surrounding Land Use - North	Heavy Industrial
Surrounding Land Use - South	Transportation
Surrounding Land Use - East	Heavy Industrial
Surrounding Land Use - West	Heavy Industrial
Site Condition	forested
Elevation (Min)	20'
Elevation (Max)	20'
Soil Type	Fine Sandy Loam
Due Diligence Performed	Wetlands Delineation Map, Phase I Environmental Site Assessment, Protected Species Report, Cultural Resources Survey Phase I, Preliminary Geotechnical Assessment, Topographic Survey, Boundary Survey
Has Restrictive Covenants	No
Rail Available	Yes
Rail Provider	CSX Transportation

# GEORGETOWN COUNTY BUSINESS CENTER



## PROXIMITY INFORMATION

Nearest Airport	Myrtle Beach International Airport
Nearest Interstate	I-95
Nearest Port	Port of Georgetown (Break-Bulk Port)

