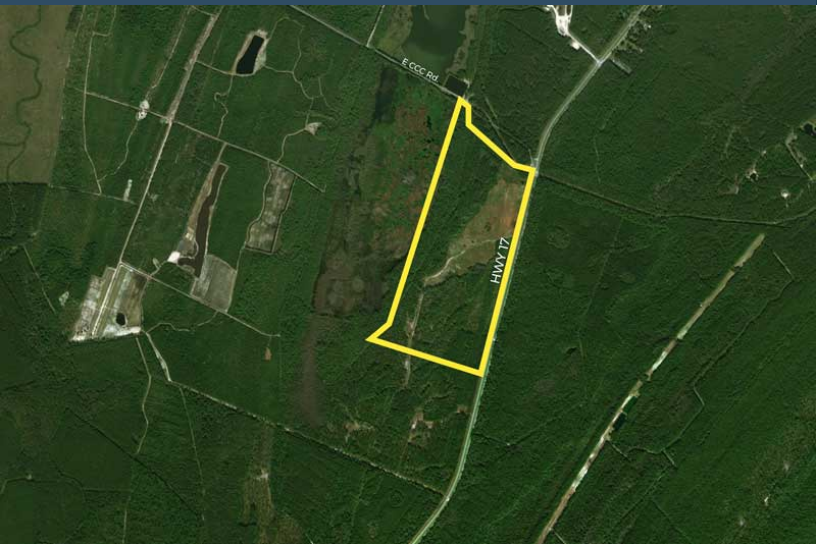


COASTAL TECH PARK



Georgetown, South Carolina 29440
Latitude and Longitude: 33.283566830, -79.35764726



LOCATION INFORMATION

City	Georgetown
State	South Carolina
Zip	29440
County	Georgetown
Date Available	10/14/2022
Municipality	Unincorporated
Latitude and Longitude	33.283566830, -79.35764726

COASTAL TECH PARK

UTILITIES INFORMATION

Primary Electric Provider	Santee Electric Cooperative, Inc.
Natural Gas Provider	Dominion Energy
Natural Gas Type	Distribution
Gas Main Size	4"
Distance to Nearest Gas Line	3 miles
Telecommunications Provider	Frontier Communications
Water Provider	Georgetown County Water & Sewer
Water Main Diameter	12"
Distance to Water Main	On Site
Wastewater Provider	Georgetown County Water & Sewer
Wastewater Type	Force
Wastewater Line Diameter	8"
Wastewater Main Distance	2.7 miles

BROKERAGE DETAILS

Sale Price Per Acre	\$50,000
---------------------	----------

SITE INFORMATION

Total Acres	219
Minimum Divisible Acreage	7.30
Maximum Contiguous Acreage	Undetermined
Developable Acres	Undetermined
Zoning	Industrial
Nearby Land Use	Undeveloped Land (N) Undeveloped Land (S) Undeveloped Land (E) Undeveloped Land (W)

Undeveloped Land (E) Undeveloped Land (W)	
Site Condition	forested
Elevation (Min)	20'
Elevation (Max)	20'
Soil Type	Fine Sand
Due Diligence Performed	Wetlands Delineation Map, Phase I Environmental Site Assessment, Protected Species Report, Cultural Resources Survey Phase I, Preliminary Geotechnical Assessment, Topographic Survey, Boundary Survey
Has Restrictive Covenants	No
Freeway Proximity is Favorable	F

COASTAL TECH PARK

PROXIMITY INFORMATION

Nearest Airport

Myrtle Beach International

Nearest Interstate

I-526

Nearest Port

Port of Georgetown

