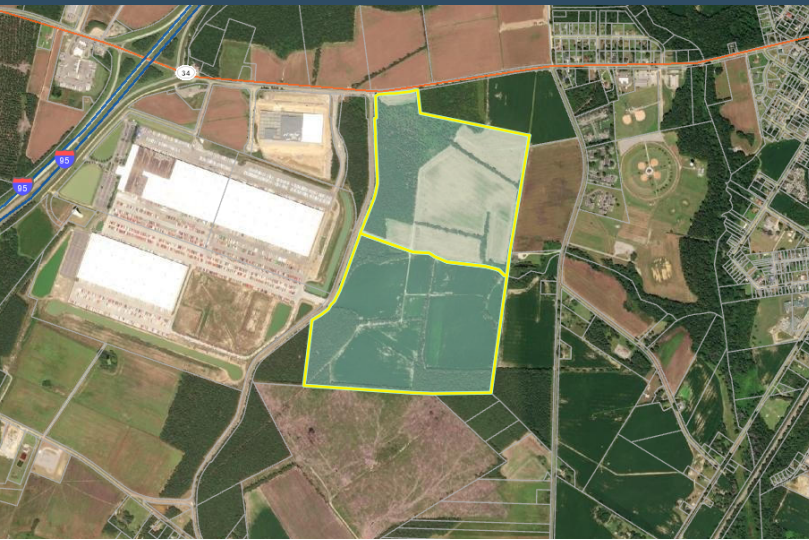


BETHEA SITE

Hwy 34 West

Dillon, SC 29536

Latitude and Longitude: 34.414367, -79.398631



LOCATION INFORMATION

Address

Hwy 34 West

City

Dillon

State

SC

Zip

29536

County

Dillon

Date Available

Latitude and Longitude

34.414367, -79.398631

BETHEA SITE

UTILITIES INFORMATION

Type of Electric	Distribution
Primary Electric Provider	Duke Energy Progress
Natural Gas Provider	Dominion Energy
Natural Gas Type	Distribution
Distance to Nearest Gas Line	On Site
Telecommunications Provider	AT&T
Water Provider	Trico Water Company
Wastewater Provider	City of Dillon

BROKERAGE DETAILS

Minimum Price Per Acre	\$30,000.00
Sale Price	\$6,499,200.00
Property Owner	Private
Maximum Price Per Acre	\$30,000.00

SITE INFORMATION

Total Acres	216.64
Maximum Contiguous Acreage	205
Developable Acres	205.00
Surrounding Land Use - North	Light Industrial
Surrounding Land Use - South	Light Industrial
Surrounding Land Use - East	Light Industrial
Surrounding Land Use - West	Light Industrial

BETHEA SITE

PROXIMITY INFORMATION

Nearest Airport

Florence Regional Airport

Nearest Interstate

I-95

Nearest Port

Inland Port Dillon

