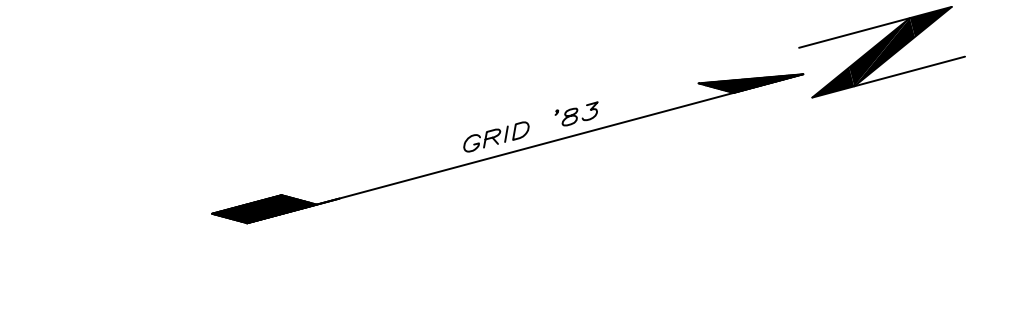


Multiple columns of 'LINE TABLE' containing survey data with columns for LINE LENGTH, BEARING, and BEARING.



LEGEND: I.P.F. - IRON PIPE FOUND, I.P.S. - IRON PIPE SET, I.F. - IRON FOUND, I.S. - IRON SET



NOTES: THIS LOT IS NOT IN A SPECIAL FLOOD HAZARD ZONE AS SHOWN ON THE FLOOD INSURANCE RATE (FIRM) COMMUNITY PANEL #400805010 DATED 3/16/89

ALL BEARINGS ARE BASED ON THE SOUTH CAROLINA STATE PLANE COORDINATE SYSTEM NAD 83 DISTANCES SHOWN ARE HORIZONTAL DISTANCES, NOT GRID DISTANCES.

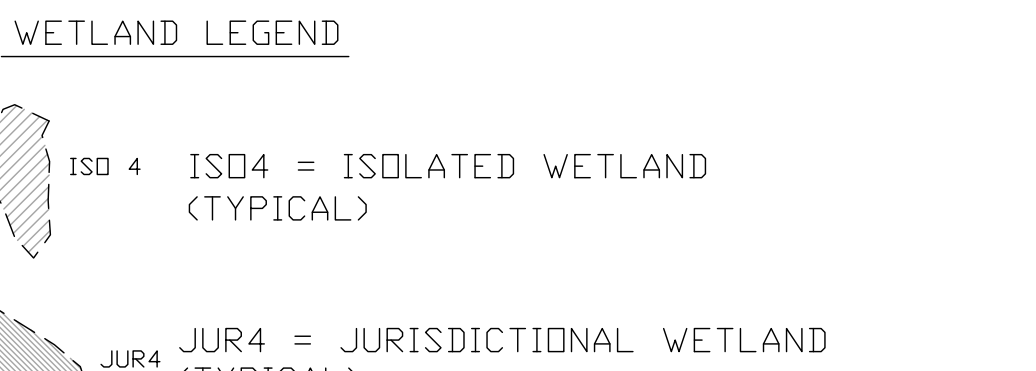
DEED REFERENCE - REFERENCE BOOK 440 PAGE 183

OWNER - PAWLEYS ISLAND INVESTMENTS LLC

GEORGETOWN, SC 29440

RED MOUNTAIN TIMBER CO. LLC 01-1006-006-02-00

AREA SUMMARY table with columns for Wetland Type and Area.



JUR4 = JURISDICTIONAL WETLAND (TYPICAL)

TRACT TOTAL 219.50 ACRES

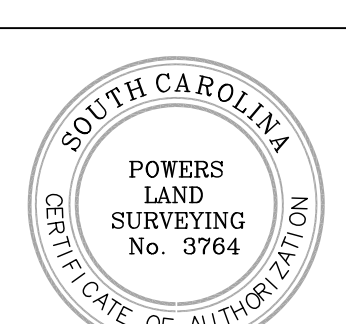
WETLAND DELINEATION BY MILIKEN FORESTRY, INC. AND PLATTED HEREON BY THE UNDERSIGNED.

FINAL WETLAND DELINEATION MAP OF 219.50 ACRES SOUTH OF GEORGETOWN, S.C.

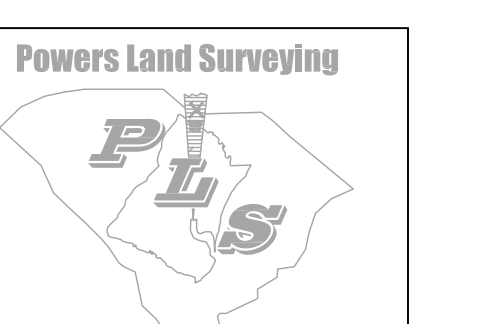
PREPARED FOR PAWLEYS ISLAND INVESTMENTS LLC

GEORGETOWN, S.C. PORTION OF T.M. #01-1006-006-02-00

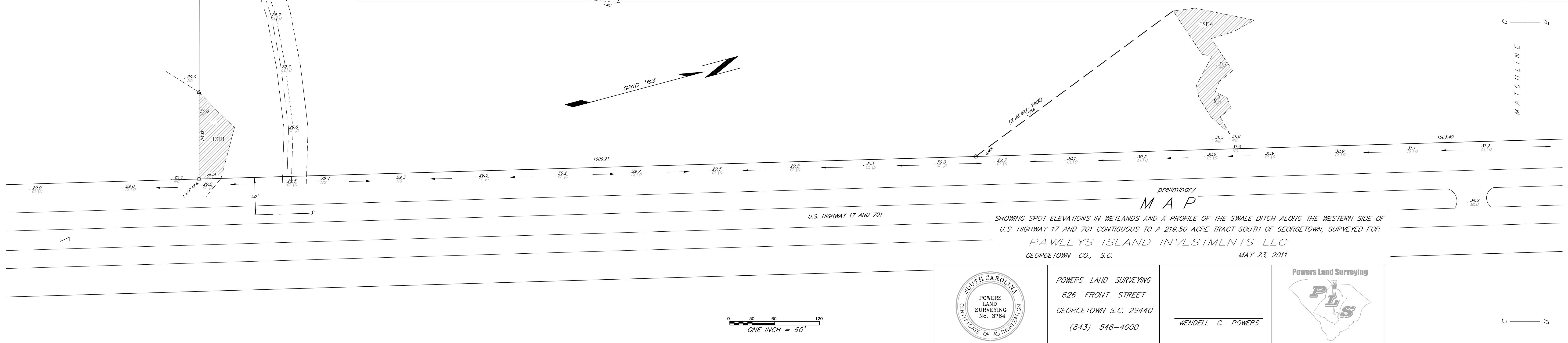
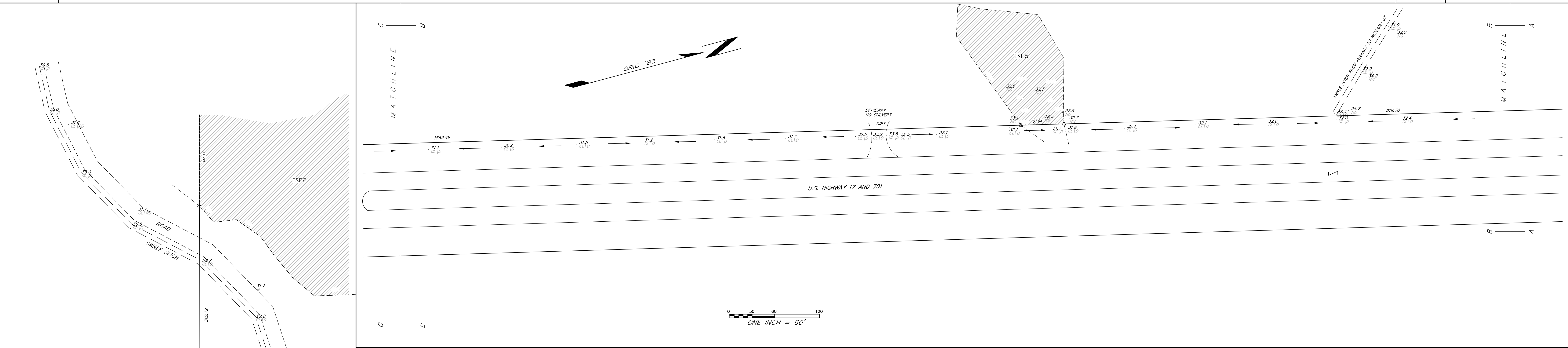
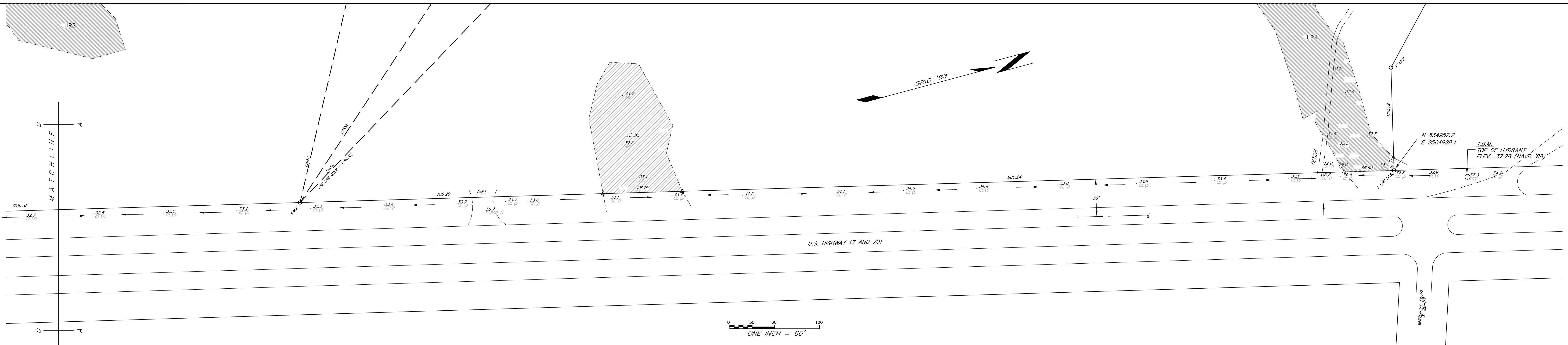
SCALE: ONE INCH = 300' NOVEMBER 15, 2011



POWERS LAND SURVEYING 626 FRONT STREET GEORGETOWN, S.C. 29440 (843) 546-4000

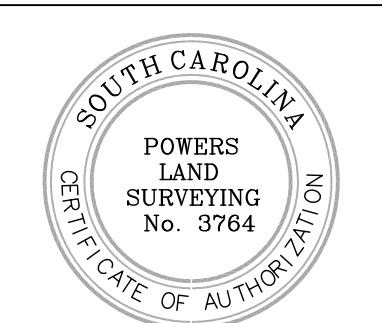


WENDELL C. POWERS SCPLS #5303



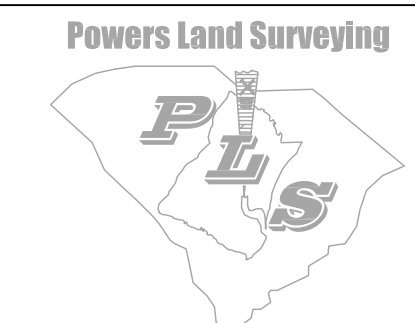
preliminary
MAP

SHOWING SPOT ELEVATIONS IN WETLANDS AND A PROFILE OF THE SWALE DITCH ALONG THE WESTERN SIDE OF U.S. HIGHWAY 17 AND 701 CONTIGUOUS TO A 219.50 ACRE TRACT SOUTH OF GEORGETOWN, SURVEYED FOR
PAWLEYS ISLAND INVESTMENTS LLC
GEORGETOWN CO., S.C. MAY 23, 2011



POWERS LAND SURVEYING
626 FRONT STREET
GEORGETOWN S.C. 29440
(843) 546-4000

WENDELL C. POWERS



ONE INCH = 60'