
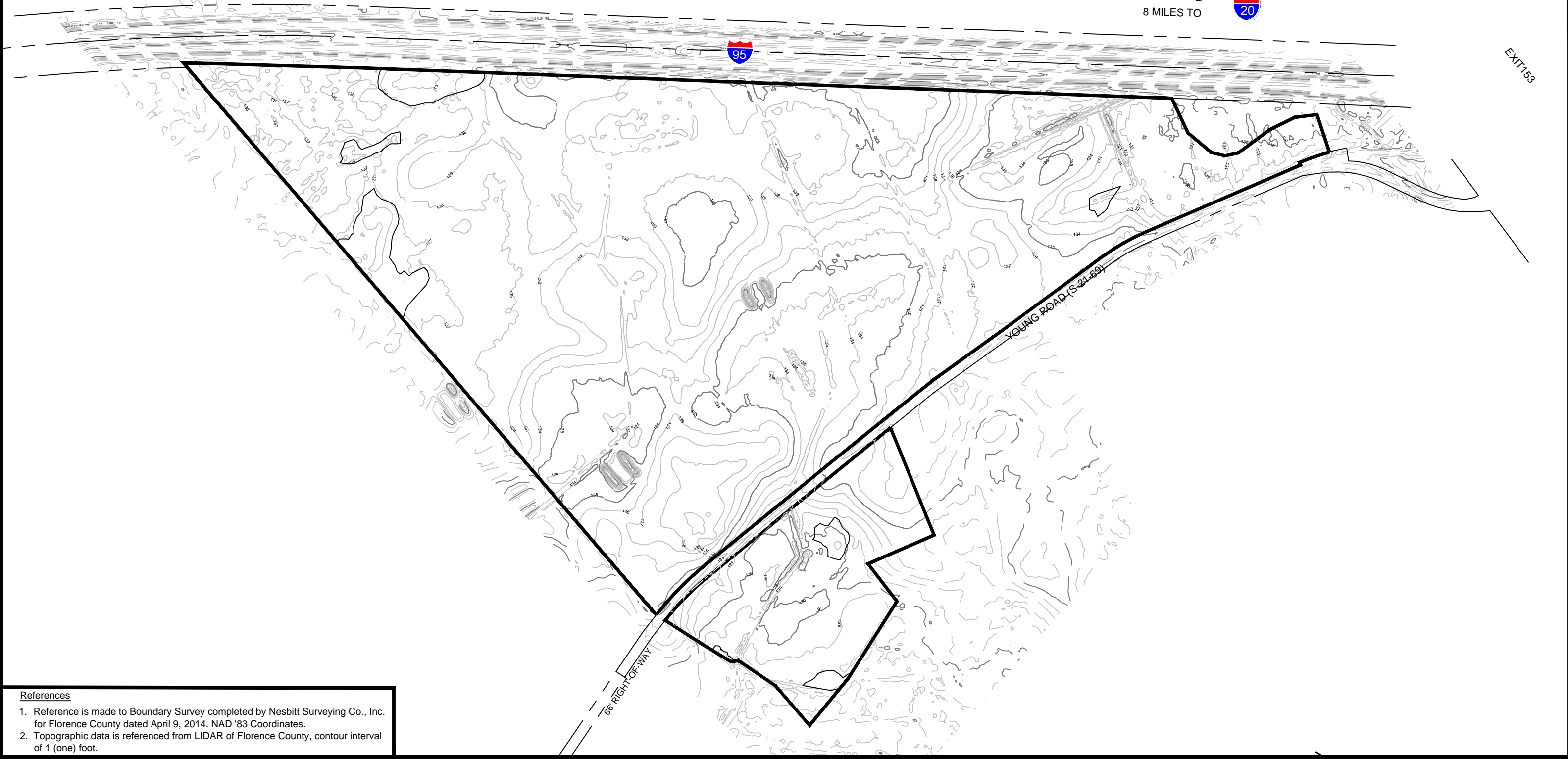


66 MILES TO 

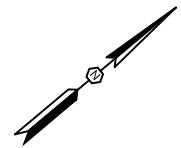
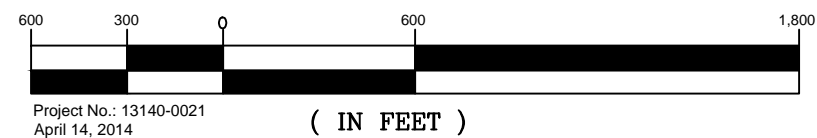
8 MILES TO 



EXIT 153



- References**
1. Reference is made to Boundary Survey completed by Nesbitt Surveying Co., Inc. for Florence County dated April 9, 2014. NAD '83 Coordinates.
 2. Topographic data is referenced from LIDAR of Florence County, contour interval of 1 (one) foot.



Aerial Topographic Survey McLendon Young Industrial Park in Florence County, South Carolina

