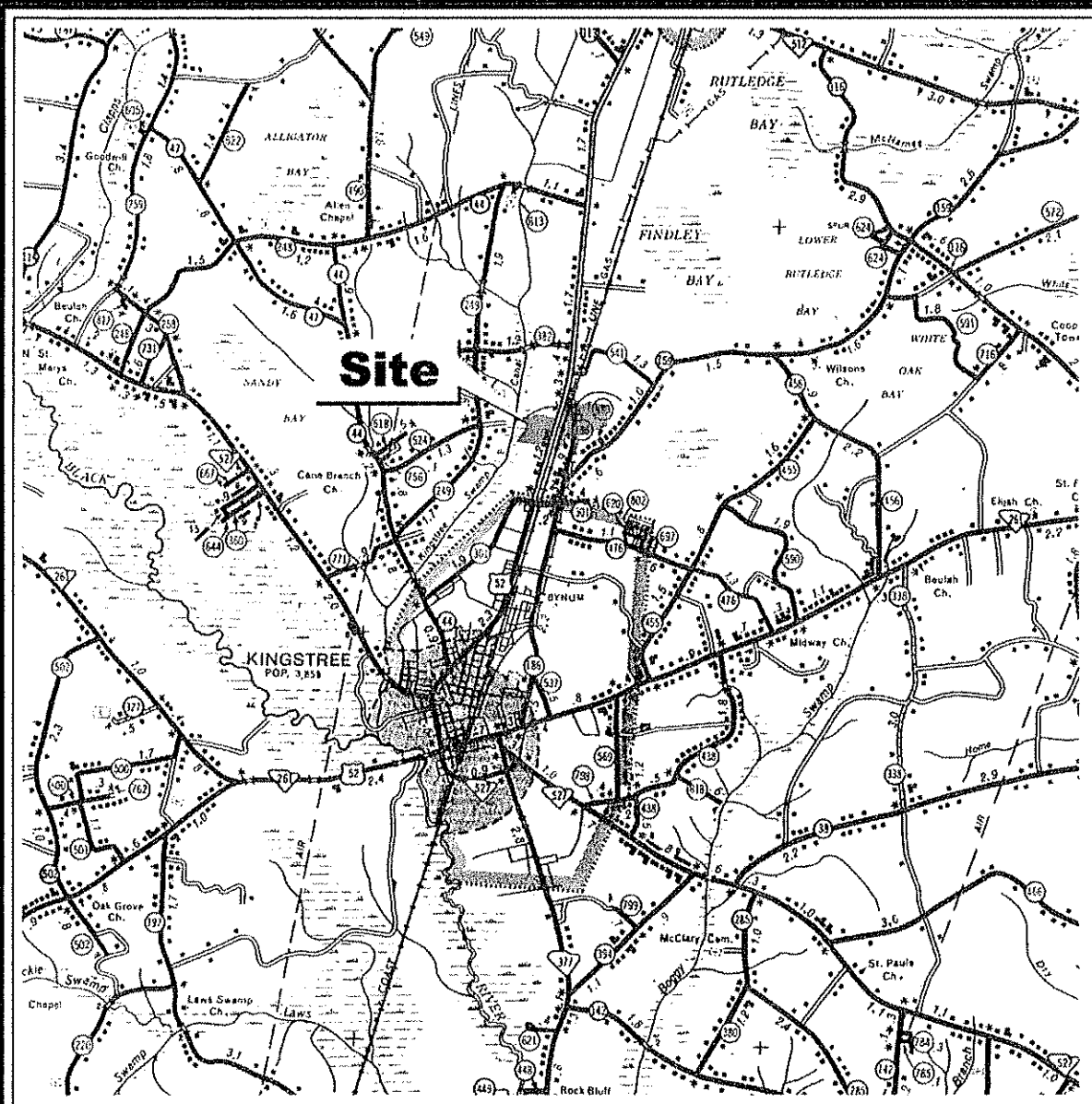


**Site Certification for the
Williamsburg Cooperative Commerce Centre South
In Williamsburg County, South Carolina**

Attachment 25

**Topographical Analysis of
Epps No. 1 Industrial Site**

THIS DRAWING IS THE PROPERTY OF B.P. BARBER & ASSOCIATES, INC. AND IS NOT TO BE REPRODUCED OR TRANSMITTED IN ANY FORM OR BY ANY MEANS, ELECTRONIC OR MECHANICAL, INCLUDING PHOTOCOPYING, RECORDING, OR BY ANY INFORMATION STORAGE AND RETRIEVAL SYSTEM, WITHOUT THE WRITTEN PERMISSION OF B.P. BARBER & ASSOCIATES, INC.



LOCATION MAP SCALE 1" = 1 MILE

AREAS:		
Parcel A	828,593 S.F.	19.022 Ac.
Parcel B	3,322,941 S.F.	76.284 Ac.
Total Site	4,151,534 S.F.	95.306 Ac.

NOTES:

Reference is made to the following:

- Boundary Survey performed by B.P. Barber & Associates, Inc. dated December 11, 2003.
- All elevations shown are based on Mean Sea Level datum.
- All existing utilities shown are approximate and must be field verified prior to construction. Other utilities may not be shown on these plans. The engineer assumes no responsibility for the locations shown and it shall be the contractor's responsibility to verify the locations of all utilities within the limits of work.



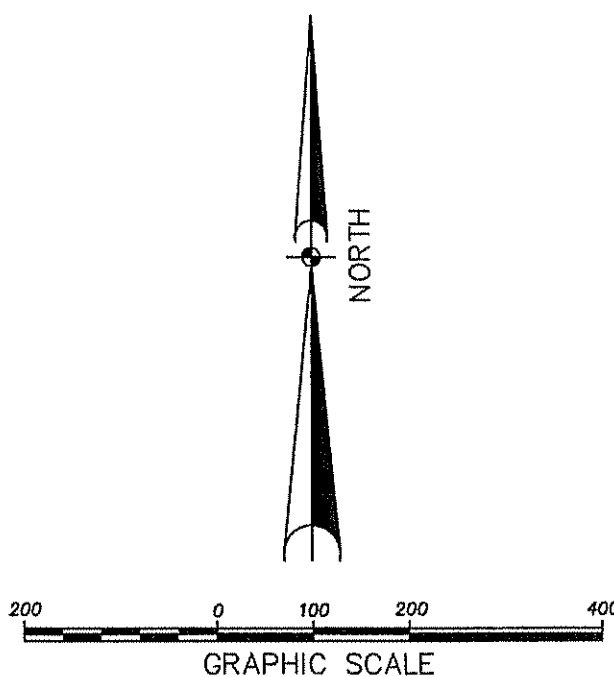
LEGEND

OVERHEAD POWER LINE	--- DHP ---
EDGE OF DIRT ROAD	---
EDGE OF PAVEMENT	---
PROPERTY LINE	---
FIRE HYDRANT	-OFH
SERVICE POLE	SPR
POWER POLE	PPR
TELEPHONE PEDESTAL	TPED
AIR RELEASE VALVE	MARV
FIBER OPTIC CABLE MARKER	FOC
GAS LINE MARKER	GAS
TREE LINE	~~~~~

NOTES:

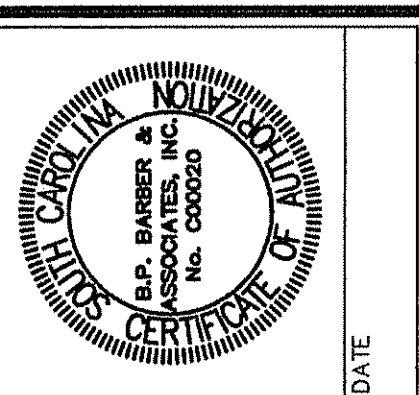
Reference is made to the following:

- Existing contours based on aerial topographic survey conducted by Sanborn dated November 10, 2003.
- Contours approximated from USGS Quad Map Kingstree, SC Dated 1975.



REVISIONS	
NO.	DESCRIPTION

APPROVALS	PROJECT ENG.	DSE	DESIGNED BY:	DRAWN BY:	CHECKED BY:	DATE



bpb
B. P. BARBER & ASSOCIATES, INC.
ENGINEERS - PLANNERS - SURVEYORS
COLUMBIA • SPARTANBURG • CHARLESTON • FLORENCE • SAVANNAH

AERIAL TOPOGRAPHIC MAP	
DATE: DECEMBER 2003	SCALE: 1" = 200'

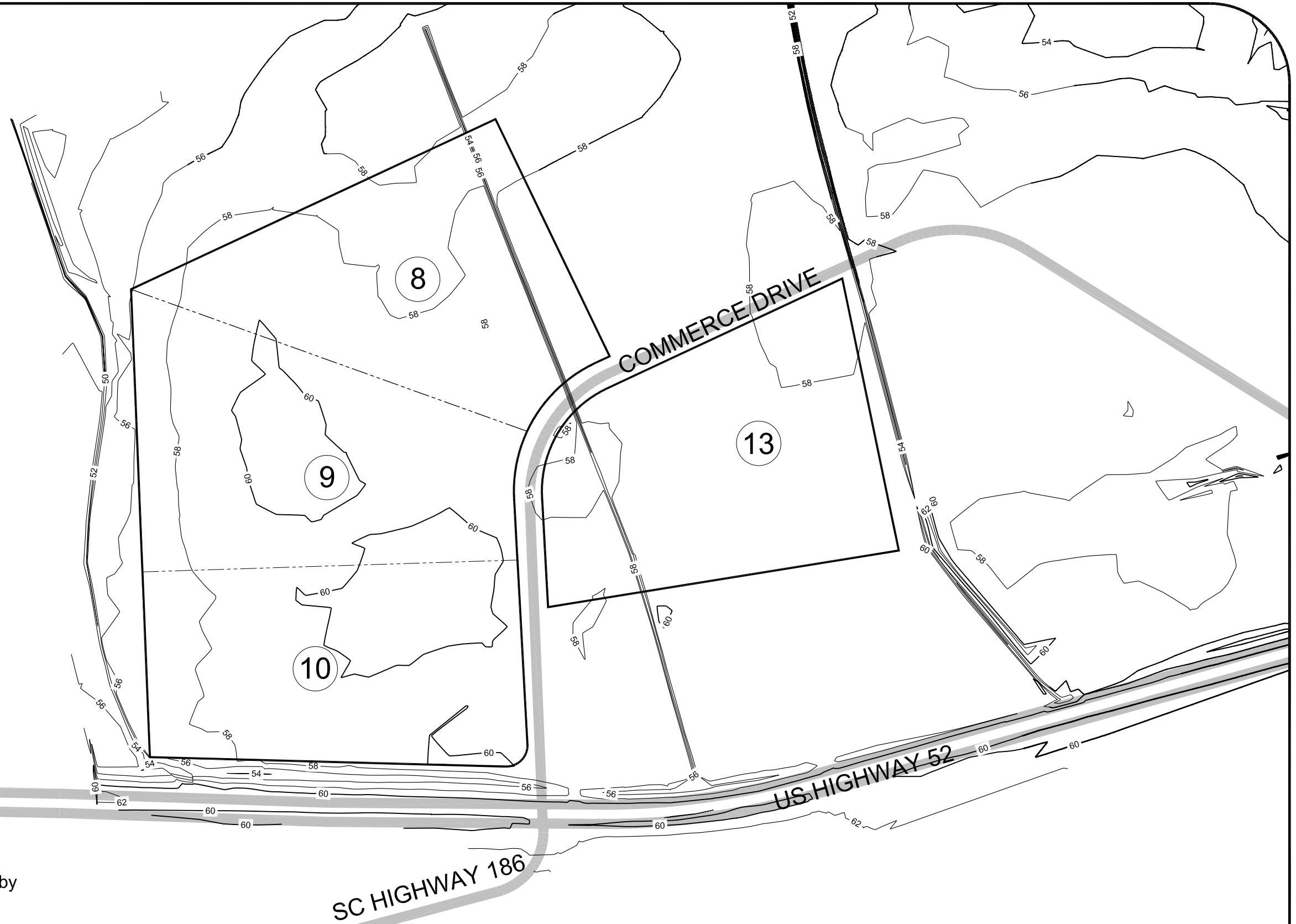
EPPS INDUSTRIAL SITE #1 FOR WILLIAMSBURG COUNTY	
PROJECT	WILLIAMSBURG COUNTY SOUTH CAROLINA

DISK 03197ET	SHEET 1
REF. 32,093-B70	OF
N.B. NO. 1929	2
PROJECT NO. 03197	
FILE NO.	32,117-B70

**Site Certification for the
Williamsburg Cooperative Commerce Centre South
In Williamsburg County, South Carolina**

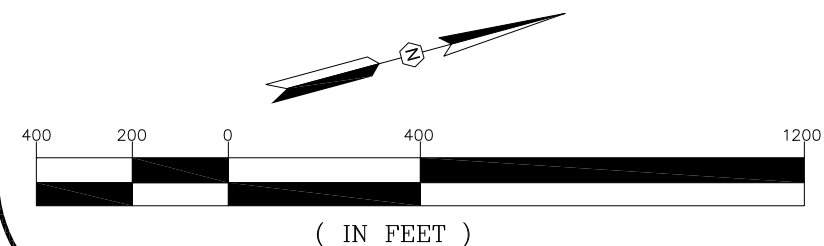
Attachment 25

**Topographical Analysis of
Tracts 8-10 and 13 of the Williamsburg Cooperative
Commerce Centre**



Notes:

Reference is made to Topographical Survey performed by Kemp Ahrens conducted on August 3, 1998.



Topography Survey for Tracts 8-10 and 13 of the Williamsburg Cooperative Commerce Center for the Site Certification for the ±112-Acre Williamsburg Cooperative Commerce Centre South

Project No.: 10140-45
March 9, 2011

