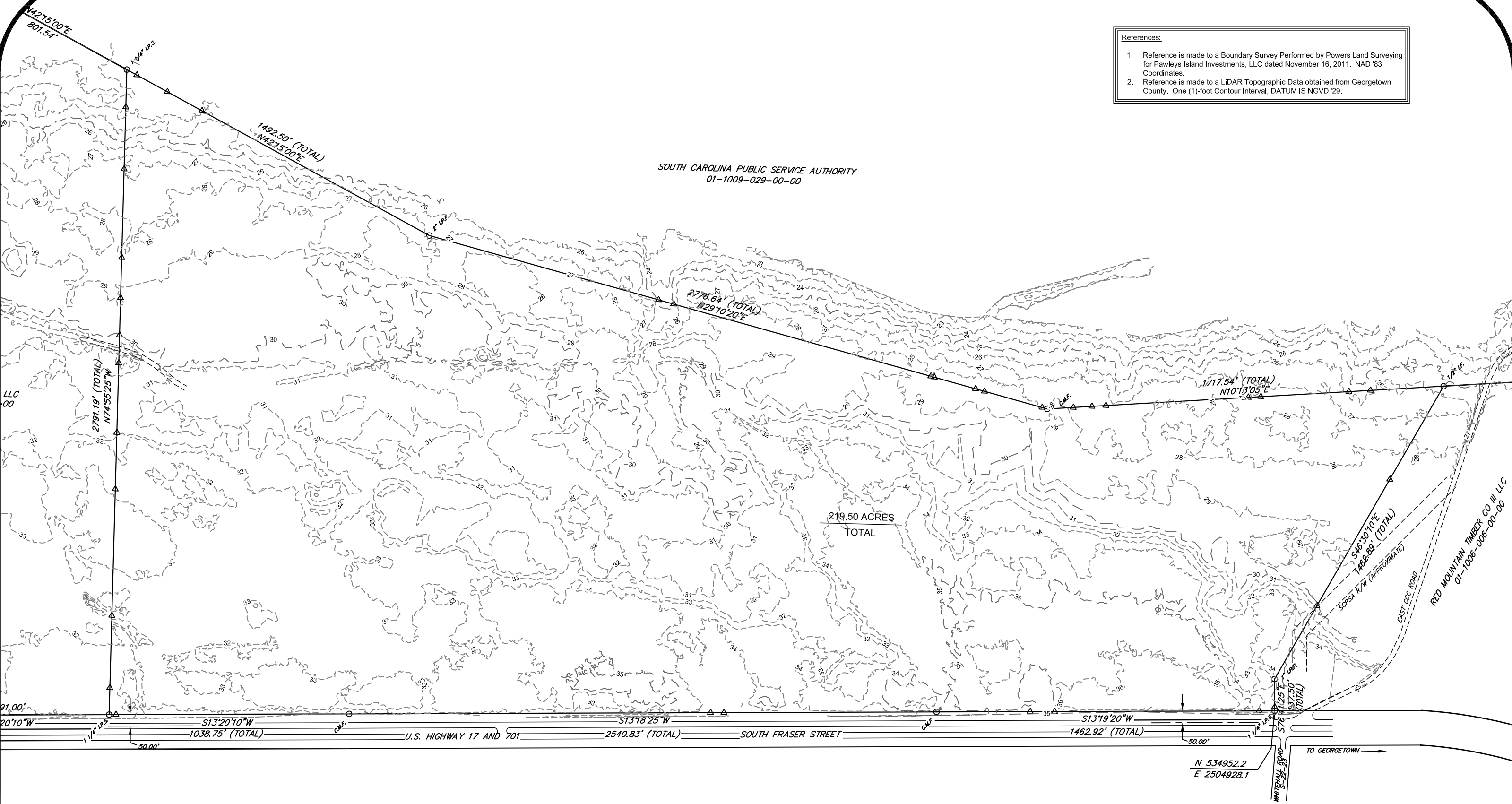


- References:
1. Reference is made to a Boundary Survey Performed by Powers Land Surveying for Pawleys Island Investments, LLC dated November 16, 2011. NAD '83 Coordinates.
  2. Reference is made to a LiDAR Topographic Data obtained from Georgetown County. One (1)-foot Contour Interval, DATUM IS NGVD '29.

SOUTH CAROLINA PUBLIC SERVICE AUTHORITY  
01-1009-029-00-00

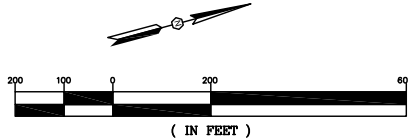
219.50 ACRES  
TOTAL



# Topographic Survey Coastal Technology Park in Georgetown County, South Carolina



Prepared by: Alliance Consulting Engineers, Inc.



Project No.: 11173-22  
November 2011